

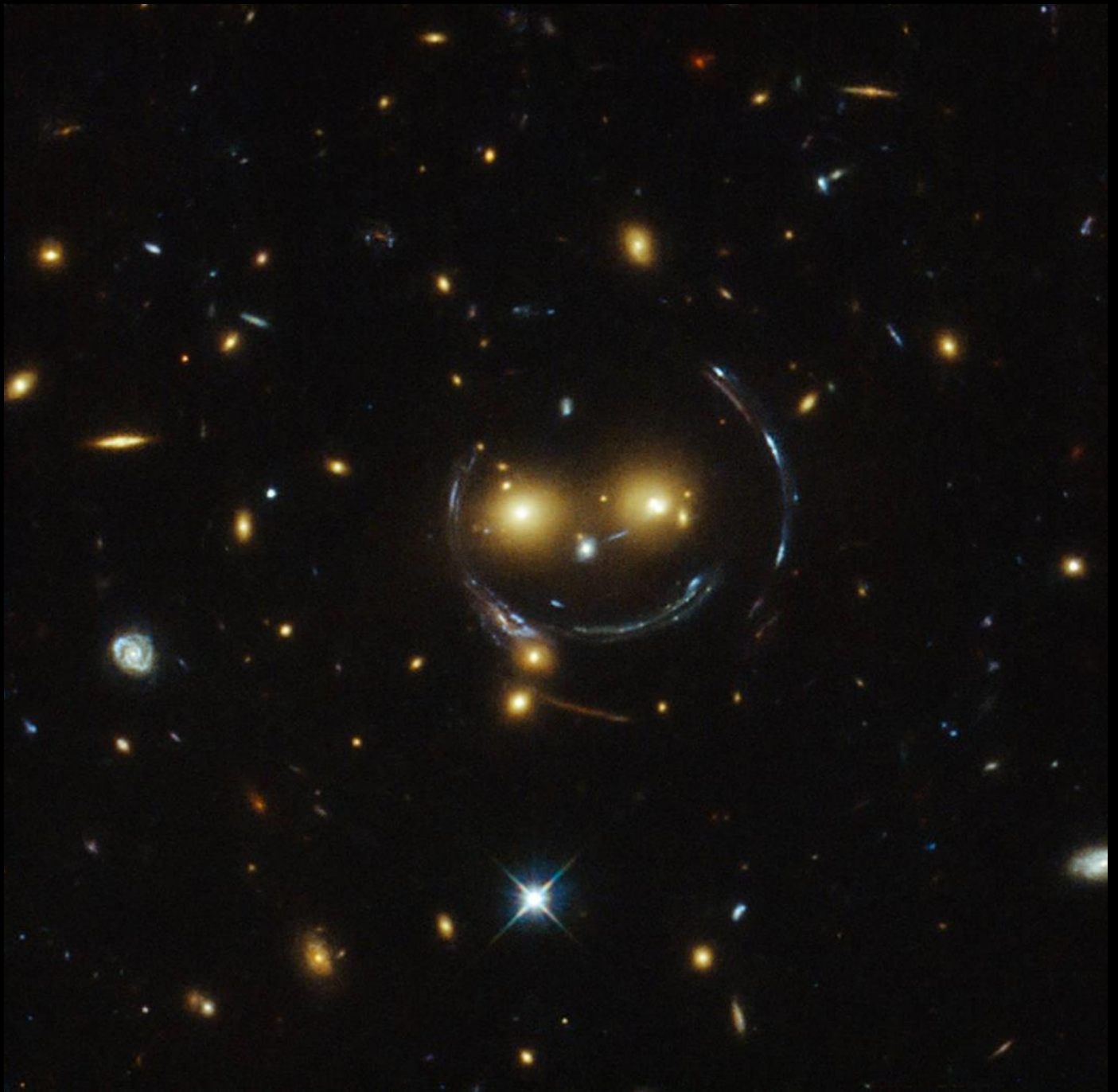
THE WRIGHT STUFF



Vol XXVII ♦ No 3

The Official Newsletter of the U.S.S. Kitty Hawk ♦ NCC-1659

May/June 2016





THE WRIGHT STUFF

Volume 27 - Number 3

is a publication of the *U.S.S. Kitty Hawk*, the Raleigh, N.C., chapter of STARFLEET, an international *STAR TREK* fan organization. This publication is provided to all chapter members in good standing. Please address all correspondence to CATBIRD Publications, 5017 Glen Forest Dr., Raleigh, N.C. 27612. This publication is a non-profit enterprise and is not meant to infringe upon any copyright or trademark held by Paramount Pictures, Gulf & Western, or any other holder of *STAR TREK* copyrights or trademarks. Unless otherwise noted, ENTIRE CONTENTS ARE COPYRIGHT © 2016 CATBIRD Publications, THE WRIGHT STUFF. Nothing in whole or in part may be used without the written permission of the publisher. *THE WRIGHT STUFF* assumes all material submitted for publication is gratis. The publisher and editors reserve the right to edit all submissions.

Publisher.....J.R. Fisher
EditorsElaine Pischke
John Troan



CONTENTS

THE CENTER SEAT 3
John Troan

COMPUTER OPERATIONS REPORT 3
John Troan

COMMUNICATIONS REPORT 3
Elaine Pischke

ENGINEERING REPORT 4
Brad McDonald

SCIENCE REPORT 5
Diane Ripollone

ST:TOS – *IN SERVICE OF THE QUEEN* 6
Brad McDonald

UPCOMING EVENTS..... 14



IMAGES - Title Banner

Wright Flyer from NASA/Ames PAO photo archive;
U.S.S. Kitty Hawk (USN CV-63) from navicp.navy.mil;
Constitution class cruiser from gwu.edu/~rljones/khawk.

IMAGE - Featured Front Page

Image of galaxy cluster SDSS J1038+4849 taken with the NASA/ESA *Hubble Space Telescope*.
<http://www.nasa.gov/content/hubble-sees-a-smiling-lens>

The Center Seat by John Troan

I've survived moving, but it's going to be a long while before we're completely settled in. Unfortunately, one side effect of the move was this newsletter issue being delayed until I could put together enough time to write my articles. (I also wrote shorter articles than usual this time around to keep the delay from being even longer.)

Thanks to all who were at the June meeting and our UNC-TV shift. We had a nice turnout and, as always, a good time was had by all. I've got Comp Ops posting the pics sometime in July.

Our July meeting will be at Texas Steakhouse in Morrisville. It won't be a cookout since our usual host isn't quite ready to host again, but we're penciling in Labor Day weekend as a "maybe".

July 22 is the opening of *Star Trek Beyond*, the third movie in the reboot. We'll be at a local movie theater on the 23rd, but I'm not sure which one yet. I'll send out updates via e-mail as we finalize plans. *Trek* uniforms will be the preferred attire, but *Kitty Hawk* t-shirts are a good alternate.

The Region 1 Coordinator election cycle has concluded. Ruth Lane has been re-elected to be our Regional Coordinator for the next five years.

The next election cycle for Commander, STARFLEET, is getting underway. From what I've seen on the Region 1 mailing lists, there are several interested parties. (The ongoing discussion within the Admiralty Board for who finishes out the current term is still.... ongoing....)

Comp Ops by John Troan

From a Comp Ops perspective, my move wasn't too bad. The *Kitty Hawk* web site was only down for a few hours as my internet connection was moved – and made faster! I powered up the servers, then moved

them into the new home office when it was ready to take them. Any rearranging I do from here on won't require taking the site off-line.

After a little more settling in, I'm planning to (finally!) finish editing our first pod cast and get it posted. This will clear the way for two things: publishing the podcast script in the newsletter during 2017 *and* starting recording sessions for our next podcast.

NASA's [Juno mission](#) is scheduled to enter polar orbit around Jupiter on July 4. Two notable points about this mission are (1) it's the first solar-powered craft this far from the sun and (2) it has the first ever radiation shielding for its electronics. The latter is needed because *Juno's* orbit will take it through Jupiter's radiation belts, which are much stronger than Earth's Van Allen belts. *[Editor's note – please see this month's [Science Report](#) for more on the JUNO mission.]*

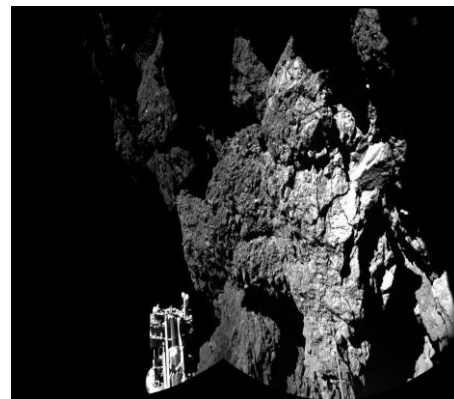
On Mars, *Curiosity* is [finishing its second cycle of Martian seasons](#). The second cycle allows scientists to start differentiating between one-time events and season patterns. Observations from *Curiosity* have recently led to the [unexpected discovery of tridymite](#), which is formed at high temperatures involved with certain types of explosions. This discovery is leading scientists to either re-think how tridymite is formed because the presumed required temperatures for formation haven't been found in Martian history or having to re-think and re-examine Martian history to look for the type of explosive volcanic activity that is currently thought to be needed for tridymite formation.

Closer to Earth, the next [Dragon cargo mission](#) to the International Space Station is scheduled for mid- or late July. Of particular note this time is the inclusion of the first international docking adapter, which will be used when Boeing and SpaceX begin their crew flights in the near future. These missions will be the first commercial transport of astronauts from a U.S. launch point.

Communications Report by Elaine Pischke

There isn't much to report. This issue of the newsletter is obviously a short one. I suppose everyone is busy with life and stuff. We here in the Pischke house have been working, or looking for jobs or having birthdays.

We are stardust. My science tidbit for this month comes from a report in 'Science Daily' from a researcher at the University of Leiden. In 2014, the Rosetta Space Probe discovered amino acids on a comet. Researcher Daniël Paardekooper hypothesizes that, if amino acids can piggyback on comets and meteorites, it is likely that these building blocks of life were brought from space to Earth in this manner, and most likely have seeded other planets in the same way.



The image is the Philae Lander on the surface of the comet.

<http://www.nasa.gov/jpl/pia18876/welcome-to-a-comet-from-lander-on-surface>

Engineering Report by Brad McDonald

I'll start with a personal note. My cancer recovery is progressing nicely. I'm pretty much back at full strength and I've already started working overtime again. (No more special treatment.) However, I'm still trying to adjust to the 'new plumbing', but I'm told that it can take up to six months to recover fully. I'm hoping it will be much sooner, but I can live with the prospect of a longer recovery; key word being, live. Meanwhile, I'm starting physical therapy July 8 which should help. Many thanks to the well-wishers of the *Kitty Hawk* crew.

Next, I have a few observations. I find myself getting saturated with super hero movies. It seems like every month, another one comes out. Frankly, I'm a bit underwhelmed. Rather than trying to see them all to keep up the story lines/threads, I'm not going any more. A few show up on my satellite movie channels now and then, but I don't rush to see them. So far I've only watched two, *Ant Man* and *Iron Man 3*. I also saw part of a *Thor* movie and *Winter Soldier*, but basically I'm just tired of 1) destroying everything while supposedly trying to save it, 2) super hero self-doubt and angst, 3) soap opera-like stories with never ending threads and 4) just too much of everything not so super.

Disney is now doing the same thing with the new *Star Wars* franchises (yes, plural). 'Jar-Jar' Abrams wants a movie a year to continue for the foreseeable future. Frankly, it's a bit much. Lucas gave us *Star Wars* now and

then, keeping us looking for another taste of the Skywalker saga. With the planned onslaught of *Star Wars* releases, the viewers may become saturated. I may be wrong, but I'm not sure the current approach is wise. I've talked to a number of people who are also questioning the multiple Marvel Universe releases. It's forcing them to decide between those movies and others, which is rather unfair to the movie going public.

What's really scary, it's rumored that CBS may be doing the same thing with the new *Star Trek* TV reboot.

For now, I'm altering my movie going habits. I'll stick with Pixar, as they offer originality and creativity without relying on destruction, explosions and never ending story lines and tie-ins. However, even they, too, seem to be caught up in the sequel trap. A quick look at the scheduled releases for Pixar lists the following: *Incredibles 2*, *Toy Story 4*, *Cars 3*, and the current release *Finding Dory*.

The situation may be self-adjusting anyway. Numbers for sequels are not looking too good these days. Sci-fi, fantasy, animated, and super hero franchises are having a hard time. The following movies have returned disappointing profits: *Kung Fu Panda*, *X-Men*, *Teenage Mutant Ninja Turtles*, *Huntsman*, *Winter War*, *Alice Through the Looking Glass*, and more. Maybe the burnout has already begun.

August will mark the 50th anniversary of *Star Trek*. Unfortunately due to finances and my new personal plumbing, I won't be able to make any of the conventions or celebrations. But I was there at the start in 1966. I

had to go to the neighbor's house to watch it, as our TV could not get the local NBC channel UHF channel 81. Our TV only got 2-13 which was the standard VHF tuner. Talk about the dinosaur days! There was an added bonus as they had color and we had black and white. *Trek* was best seen in color so you could see who was wearing the red shirt and, therefore, knew who was going to die. The first episode wasn't great, but things got a lot better. Who knew we'd be observing the 50th anniversary with multiple series, movies, books, conventions and even our *Star Fleet* organization. Maybe we'll get another 50 years!

Netflix just announced a reboot of the *Lost in Space* TV series. Ten episodes have been ordered but they did not name any stars or schedules.

Most important news of the month concerns the new rules and guidelines from Paramount and CBS regarding fan productions of *Star Trek* episodes and movies. The rules listed so far are as follows:

1. Length must be less than 15 minutes. Up to two episodes or parts can only be 30 minutes maximum. 'Follow-ups' are not allowed.
2. The name *Star Trek* can't be used in the name and "A *Star Trek* fan production", must be used in the project subtitle and promotions.
3. You have to use official *Star Trek* merchandise in the production, no 'knock-offs'.

4. Anyone who was part of a previous *Star Trek* production can't participate in the production and the people who do work on it can't be compensated.
5. Fan films are non-commercial and you may raise a maximum of \$50,000 for your production.
6. Fan films must include a disclaimer that says CBS Studios and Paramount Pictures do not endorse and are not affiliated the film.

This essentially puts an end to fan film projects. I'm really disappointed about this. I think it's a huge mistake. After all, it was these fan productions that kept the *Star Trek* franchise going for many years while CBS and Paramount tried to get their act together. I doubt any of the fan productions would cut into the profits of the two major studios and I'm sure that anyone who watches the fan films knows they aren't official and take them as they are, an enthusiastic group of fans who simply want to part of the *Star Trek* family in their own way. In any event, I think the rules are a bit heavy handed and unnecessary. It's a shame as some of the fan productions were very good.

Lastly, this issue will start my first two part story. To keep it from lasting too long, we're doubling up the presentation to maintain the same schedule of one story a year. Hope you enjoy it.

Science Report by Diane Ripollone

The reason I write about the *JUNO* mission this issue is because I had the opportunity to work with some of the members who are part of the

team. Four years ago I had the opportunity to go the Southern California to work at the GAVRT (Goldstone Apple Valley Radio Telescope: <http://www.lewiscenter.org/gavrt>).

This opportunity allowed me a chance to talk to one of the head scientists from *JUNO*, Dr. Steven Levin. [Dr. Levin](#) was a great resource about the mission. The goal of *JUNO* is "Understand origin and evolution of Jupiter, look for solid planetary core, map magnetic field, measure water and ammonia in deep atmosphere, observe auroras." (taken from NASA mission page). When Dr. Levin talked about the mission, he emphasized how important it was to study the auroras and magnetic field. He said that Jupiter works quite different from other planets because of its size and composition. Speaking of composition he was really excited about the prospect of finding out what truly lies beneath all the gases in Jupiter's atmosphere. Specifically, is there any water in its atmosphere?

While the *Hubble Telescope* was observing the Auroras on Jupiter on June 30th 2016, *JUNO* was measuring the solar wind of Jupiter. As *JUNO* nears Jupiter it will experience the stream of charged particles called the Solar Wind. *JUNO* will arrive at Jupiter on July 4th. So this article will be printed after its arrival. When I spoke to Dr. Levin this year, he said they were already making history with the mission since it is the first mission to be totally solar powered. As *JUNO* gets closer it has already started to take readings and sending information back. Recent information was captured by *JUNO*'s wave instrument in the form of sound; Jupiter's wave instrument recorded information as



JUNO crossed the magnetic boundary of Jupiter's magnetic field. NASA calls it a "Bow Shock", this is where the solar wind is slowed by Jupiter's magnetosphere (https://youtu.be/8CT_txWEo5I). But more to the point is why are we going to Jupiter? Well for one it's cool. But more importantly, this mission will help us to better understand how the Sun and other sources influence auroras, how the magnetic field influences Jupiter's environment and finally how does Jupiter's core look? All questions that might help us to better understand other gas planets we find in our universe. "Why so important?" you ask. Well, we are now starting to realize that life may be on the moons of these planets. For example Europa, which has been proposed as a future mission.

If you interested in *JUNO* here are some cool YouTube videos worth viewing https://www.youtube.com/playlist?list=PLTiv_XWHnOZpVYDJ9GkooA0BnkNAKJ9ot.



ST:TOS - *In Service of the Queen* By Brad McDonald

INTRODUCTON

There were a number of reasons for writing *In Service of the Queen*. I suppose the most compelling though was the fact that my grandmother was English. A war bride (World War I), she came to the U.S. in 1919 but never let go of her accent, vocabulary or love of the royal family. Mabel was the epitome of 'Rule Britannia', tea time and other traditions. She was my only grandparent as my father was an orphan and my other grandfather died before I was born.

Another reason stems from a perceived need to incorporate more secondary characters into a story featuring them. What better way to do it than to double their parts! So we have Riley and Riley II plus Kyle and Kyle II.

This story falls into the 'what if' category. What if the British Empire had endured another 200 years or more? Previously the what if premise had resulted in stories of parallel Earths as seen in episodes like 'Bread & Circuses', 'Miri', and 'Omega Glory'. I just couldn't resist trying one myself.

The idea for this story was put on paper in outline form while I was in the Air Force and *Star Trek* was still on NBC. (Hurry up and wait gives you lots of spare time.) The outline was lost for a number of years following several moves, but resurfaced following a major clean up in 2007. Now it's completed, which might

constitute a record for one story: 1969-2015.

I think it would have been fun to see this story produced with special costumes and sets along with the 'accents of the Empire'. I've assigned this story a place in the unrealized 4th season which Roddenberry had planned for but never happened.

I now present it here and hope you enjoy it.

TEASER

FADE IN:

EXT. SPACE – THE ENTERPRISE
Ship is at warp speed.

INT. ENTERPRISE – BRIDGE –
EMPHASIZING KIRK

KIRK is on the upper level surveying the bridge and crew. Present are SPOCK, SULU, CHEKOV, UHURA and several N.D. crew at auxiliary stations.

KIRK'S VOICE

Captain's log, Star Date 5858.6. We are investigating a space anomaly reported by the freighter Avalon. The anomaly seems to be emitting multiple signals and it's possible a ship may be in distress.

BRIDGE – WIDE ANGLE

Kirk steps down and sits in command chair.

KIRK
(to Chekov)

Estimated time of arrival, Ensign?

CHEKOV

E.T.A.; twenty-seven minutes.

Kirk turns to Spock who is working at his console.

ON SPOCK

He is studying the console viewer.

SPOCK

Mr. Chekov's estimate confirmed. Anomaly on scanners now, Captain.

He makes a few adjustments then:

SPOCK
(continuing)

Most curious.

NEW ANGLE

Kirk rises from the command chair and moves to Spock.

SPOCK
(continuing)

Multiple readings; various energy types, subspace radio emissions and... much more.

TWO SHOT – KIRK AND SPOCK

Kirk is standing next to Spock as he stands up.

KIRK

What do you make of it Spock?

SPOCK

I believe it would best be described as, what Doctor McCoy would call... alphabet soup.

Kirk suppresses a smile.

KIRK

Really? How so?

SPOCK

A number of interconnecting and multilayered readings. All quite... illogical, Captain.

Kirk has a little fun with Spock.

KIRK
(moving)

A real mystery, is that it?
Maybe even... fascinating?

Spock returns to his work and becomes engrossed.

SPOCK

Most unusual, we could spend days investigating the phenomenon, it is quite... interesting in a number of ways.

ON KIRK – CAMERA FOLLOWS ACTION

Kirk returns to the command chair, shaking his head, amused.

KIRK
(moving)

Well, at least it's not a false alarm. Uhura, contact Captain Boyd on the Avalon and send my compliments. We have located his anomaly and have begun investigating and thank him for providing Mr. Spock with a good mystery.

BRIDGE – WIDE ANGLE

The bridge crew smiles at the last comment as Kirk sits.

KIRK
(continuing)

Mister Sulu? Let's try maximum magnification, maybe we can see it.

SULU

Aye, sir! Maximum magnification.

NEW ANGLE – ON VIEWER

Screen is full of the anomaly.

KIRK (O.S.)

It takes up the whole viewer!

ON SPOCK

SPOCK

Sorry, Captain. I neglected to mention that among its

many aspects, it also quite large.

NEW ANGLE – KIRK AND UHURA

UHURA

Captain, I'm picking up a strong signal emanating from the center of the anomaly.

SPOCK (O.S.)

Confirmed. Also a... presence.

KIRK

A presence?

UHURA

Sir? A signal... it's a hail.

KIRK

Open a channel, Lieutenant.

UHURA

Ready, Captain.

KIRK

To unidentified ship. This is the United Federation of Planets –

There's heavy static and feedback.

UHURA

Sorry sir, it's the anomaly. I'll compensate and try again.

NEW ANGLE – ON COMMAND SECTION

SULU

Captain, I'm getting a reading on another ship, heading our way.

KIRK

Precautionary mister; screens and shields until we know what we're dealing with. Details?

SULU

Difficult to get a fix, sir. Too much interference, I'm adjusting.

CHEKOV

Estimate intercept in two minutes, sir.

KIRK

Reduce speed to sub-light; make warp point five. If we can't be sure of their exact location, I don't want to run into them.

SULU

Sub-light, point five, aye.

ANGLE ON MAIN VIEWER

A ship begins to appear through the anomaly.

BRIDGE – WIDE ANGLE

KIRK

Anything?

SPOCK

Specifics are difficult, but reads as a... starship!

Kirk is very surprised and puzzled.

KIRK

Coming from inside? Try hailing them again, Uhura.

UHURA

Aye, sir!

AS BEFORE – ANGLE ON MAIN VIEWER

The image clears and a starship appears, the H.M.S. Enterprize, a Victorian starship with octagon shaped hulls, engines and decorated in period ornamentation.

CLOSE ON KIRK

KIRK

Is that what it appears – ?

Kirk is cut off by audio.

KYLE II (V.O.)

I say, this is H.M.S. Enterprize. Who might you be?

UHURA

I have visual, sir.

KIRK

By all means...

AS BEFORE – ANGLE ON MAIN VIEWER

Image is of KYLE but with a different uniform and rank of Captain.

KYLE II

Are you one of her majesty's ships?

BRIDGE – WIDE ANGLE

The crew is in shock. Off their reactions...

FADE OUT

END OF TEASER

PART ONE - ACT ONE

FADE IN:

ACTION IS CONTINUOUS FROM TEASER

EXT. SPACE – ENTERPRISE AND HMS ENTERPRIZE SHIPS ARE MOTIONLESS IN SPACE CLOSE TO EACH OTHER

INT. ENTERPRISE – BRIDGE – WIDE ANGLE

SULU

At full stop, sir. So is the other... uh... ship.

KIRK

Spock?

SPOCK

Just as it appears, captain. A starship with a few... interesting differences.

ON KIRK

KIRK

Uhura, channel still open?

UHURA (O.S.)

Yes, sir.

KIRK

Do I have the pleasure of addressing... Captain Kyle?

Kyle II is very surprised to be recognized.

KYLE II (O.S.)

Why yes. Have we met before?

KIRK

Not exactly, but I have... heard of you.

ANGLE ON MAIN VIEWER

Kyle II is confused and suspicious.

KYLE II

I see. Are you colonials? I'm not familiar with your ship or designation.

KIRK (O.S.)

Actually, we're the starship Enterprise and we represent The United Federation of Planets.

KYLE II

The united what?

KIRK (O.S.)

Federation of Planets.

KYLE II

Doesn't sound exactly cricket. Number one?

From B.G. another figure steps forward, it's RILEY II!

RILEY II

Sir?

KYLE II

You familiar with this... United Federation... whatever?

Riley II is very suspicious and almost hostile.

RILEY II

Not at all, sir. They're probably rebels on a commandeered vessel.

ON KIRK

He doesn't like the attitude or the suggestion and takes control of conversation, adamant and firm.

KIRK

Just who are you and who do you represent?

RILEY II (O.S.)

Cheeky blighters aren't they, sir?

KIRK

(adamant)

I'm still waiting for an answer.

KYLE II (O.S.)

It's obvious. We're in her majesty's service.

KIRK

(confused)

Her majesty?

KYLE II

Who else? Queen Victoria VII.

BRIDGE - WIDE ANGLE

The crew is stunned to silence again for a few beats.

SPOCK

(quietly)

Captain, I suggest a face to face meeting. It could answer any number of questions.

AS BEFORE – ON KIRK

KIRK

(quietly)

Agreed.

(to Kyle II)

Sir. Do you think a meeting would be possible, in order to sort out our... confusion?

NEW ANGLE – VIEWER AND KIRK

Riley II leans in and whispers something to Kyle II.

KYLE II

Conditions, sir?

KIRK

In the interest of peace, we're at your pleasure.

Kyle II looks self-important and confident.

KYLE II

(to Riley II)

You see, Number One, it's just fine, not a bit of bother, eh?

(to Kirk)
How about my ship in thirty minutes? We'll meet you on our shuttle deck.

KIRK
That would be satisfactory, but wouldn't transporters be quicker?

KYLE II
Transporter? What would that be?

We can see Kirk react to the question and in thought.

KIRK
Just another form of travel.

KYLE II
Thirty minutes then.

Viewer image is replaced by a star field.

BRIDGE – WIDE ANGLE

The crew is stunned.

KIRK
Mister Sulu, stand down from red alert; lower shields and screens.

Sulu activates controls; there's a change in lighting.

SULU
Aye, sir!

KIRK
Comments people?

UHURU
(smiling)
Are you going to take our Kyle and Riley with you captain?

CHEKOV
It could prove to be interesting.

Spock steps down next to Kirk.

TWO SHOT – KIRK AND SPOCK

SPOCK
If I may, sir. I believe it would be wise to keep our own Riley and Kyle here, at least for the time being.

KIRK
Reason?

SPOCK
Apart from the cultural shock or psychological impact, the crew on the other ship may view it as an attempt at subterfuge.

KIRK
Agreed. Do I have any volunteers?

BRIDGE – WIDE ANGLE

Everyone looks eager.

KIRK
(continuing)
I like your enthusiasm. They didn't place a restriction on numbers, so; McCoy, Sulu, Uhura, Chekov and myself.

(to Spock)
You mind the store, just in case Spock.

SPOCK
Very wise, sir. If I may...

Kirk steps closer to Spock and speaks quietly.

AS BEFORE - TWO SHOT – KIRK AND SPOCK

KIRK
What is it?

SPOCK
Their ship is still operating with screens up, sir. Also, I detected a less than trusting nature in the form of their Mr. Riley.

Kirk smiles knowingly.

KIRK
Which is why I'm leaving you here. Also, there's the matter of investigating the anomaly.

SPOCK
I was, in fact, suggesting that I go in place of you.

KIRK
Insatiable curiosity?

SPOCK
Actually, I was concerned for your safety and that of the Enterprise... our Enterprise.

KIRK
Duly noted Spock. However, I believe I'll take the chance; captain's privilege.

(beat)
My curiosity may not be insatiable, but it has been raised considerably. You have the conn.

EXT. SPACE – U.S.S. ENTERPRISE AND H.M.S. ENTERPRIZE

The two ships are motionless, anomaly is in B.G.

INT. HMS ENTERPRIZE - HANGER DECK – GALILEO

Kirk, McCoy, Uhuru, Sulu and Chekov exit the shuttle. An N.D. honor guard is at attention as Kyle II, Riley II step forward with COOK, HUDSON and SMYTHE.

KYLE II
Captain Kirk, this of course is Commander Riley, Doctor Cook, ship's surgeon Commander Smythe, my engineer and Lieutenant Hudson, commanding the royal marines.

Kirk nods in acknowledgement then indicates his party.

KIRK
My officers; Dr. McCoy, chief medical officer; Lt. Uhura, communications; Lt. Sulu, helm and Ens. Chekov, navigation.

Both crews look uncomfortable and tense; Riley II is staring intently, almost hostile.

KYLE II
Well, shall we retire to a more comfortable location?

They move towards the exit, Kyle II and Kirk lead.

KYLE II
(continuing, moving)
So, Kirk, I'm still not clear on your... mission.

KIRK
(moving)
We're an exploratory vessel and came here to investigate the nearby anomaly.

KYLE II
(moving)
We were curious about it, too.

They exit the shuttle bay and enter the corridor.

INT. CORRIDOR

The ship is very similar to Enterprise with only minor differences.

KIRK
(moving)
What did you find?

KYLE II
(moving)
Lots of energy and not much organization. We tried to get closer to analyze the beast.

KIRK
(moving)
A bit too close I take it.

Kyle II stops suddenly and the others follow.

KYLE II
(indignant)
How's that, sir?

TWO SHOT – KIRK AND RILEY II

Kirk is matter-of-fact but superficially pleasant.

KIRK
You passed through it into our space.

Riley II becomes irritated and openly hostile.

RILEY II
Your space? I doubt her majesty would agree with that.

Kirk remains firm and confident, eying Riley II.

KIRK
Maybe, but have you been able to contact your people?

KYLE II (O.S.)
Why... no. Have you?

Kirk continues his stare at Riley II, confident.

KIRK
Of course, we're home. My science officer speculates that the anomaly may allow travel between dimensions.

RILEY II
Balderdash. A lot of tommy rot if you ask me. You can't prove it.

ON MCCOY

McCoy is annoyed by Riley II and Kyle II.

MCCOY
And you can't disprove it!

CUT TO:

CONFERENCE ROOM – WIDE ANGLE

It's a large room, very ornate with wood paneling, artwork, Victorian furniture and furnishings. Everyone takes a seat; respective crewmembers sit on opposite sides of the table. The atmosphere is tense.

NEW ANGLE

KYLE II
So what is this... federation?

Kirk gives a nod to Uhura.

UHURA
It's a collection of planets organized for cultural exchange, trade and common defense.

SULU
The Federation is over one hundred years old and Earth was one of the founding members.

SMYTHE
Earth? You're from Earth?

UHURA
Central Africa.

SULU
San Francisco.

CHEKOV
Russia.

MCCOY
(dryly)
Georgia; not Russia.

Kirk smiles at McCoy's comment, which eases tension.

KIRK
Iowa.

RILEY II
I knew it, rebels.

KIRK
(confused)
How's that?

ON KYLE II

KYLE II
Number One is speaking of an unfortunate uprising in our North American colonies. I'm not familiar with Iowa, but Georgia is well known as part of the rebellion.

ON KIRK

Kirk tries to reason with Kyle II.

KIRK
Your history and ours are very different. I'm here to discuss what to do about your presence in Federation space. You don't belong here.

ON RILEY II

RILEY II
So you keep saying, but we only have your word for that. I don't trust you or believe you.

NEW ANGLE
McCoy is about to verbally attack Riley II. Kirk notices and intercedes quickly.

KIRK
I have an idea. We will give you a summary of our history and you can verify what we have said.

KYLE II
Sounds reasonable.
Riley II remains quiet and sullen.

UHURA
(to Kyle II)
Perhaps you'd like to do the same and let us learn more about you.

Riley II is very condescending and superior sounding.

RILEY II
I doubt there's much we could learn from... colonials.

Kirk reacts and Kyle II tries to ease the tension.

KYLE II
A lovely idea from a lovely lady.

RILEY II
(protesting)
But they'll have access to --

KYLE II
(interrupting)
- our records, and we'll have access to theirs. And their data on the anomaly too, right?

ON KIRK

Kirk is getting frustrated with the situation but tries to remain friendly.

KIRK
Mr. Chekov will be happy to assist you, right ensign?

ON CHEKOV

CHEKOV
Of course, Captain. I can download Mr. Spock's findings onto a data tape

and transmit it to Captain Kyle personally.

RILEY II (O.S.)
(suspicious)
Who is this Spock fellow?
McCoy doesn't like the arrogance of Riley II and begins to defend Spock.

NEW ANGLE

MCCOY
Our first officer and a first rate scientist.
He finishes the statement, satisfied and smug.

KIRK
Now that we're agreed, would it be possible to see a bit of your ship?

RILEY II
I'm not sure --

KYLE II
(interrupting)
Of course. Since you have agreed to cooperate with us, it's the least we can do.

Everyone stands to leave. The Enterprise crew looks closer at the room's decor when McCoy stops suddenly.

MCCOY'S P.O.V.

Artwork shows space battle titled "Defeat of Vulcanians".

CLOSE ON KIRK AND MCCOY

Kirk approaches and McCoy points to the artwork. Kirk looks, then indicates for McCoy to be quiet. McCoy is stunned.

Off McCoy's reaction...

FADE OUT

END OF PART ONE - ACT ONE

PART ONE - ACT TWO

FADE IN:

EXT. SPACE ENTERPRISE AND HMS ENTERPRISE

The two ships are motionless; anomaly is in the B.G.

INT. ENTERPRISE -- BRIDGE -- ANGLE ON TURBOLIFT DOORS

The landing party exits; conversation is in progress.

MCCOY
(moving)
...but Jim, they're self-centered, arrogant...

Kirk stops and turns to his friend, amused.

KIRK
Don't tell me you're at a loss for words.

MCCOY
Maybe you can laugh, but I'm telling you, they're a threat! I'd rather tackle a... Romulan warbird, than deal with those...

He sputters at a loss again.

KIRK
...people?

MCCOY
You're being much too kind.

THREE SHOT -- KIRK, SPOCK AND MCCOY

Spock approaches as the others relieve N.D. crewmembers.

SPOCK
Is there a problem, Captain?

MCCOY
I'll say! Those 'people' are a royal pain in the --

KIRK
(interrupting)
Okay Bones, we get the picture.

MCCOY
Speaking of pictures...

He leaves the sentence unfinished and glares at Kirk.

KIRK

Oh, yes. Mr. Spock, it seems in the other ship's reality, Vulcan is a conquered race and subject to her majesty's pleasure.

Spock's eyebrow arches upward.

SPOCK

Indeed, I find that most... unsettling.

MCCOY

I found the whole visit unsettling. Also, they're... backwards.

SPOCK

Really? In what way doctor?

MCCOY

For one thing, their medicine is about 150 years old.

NEW ANGLE

UHURA

Yes Captain, I noticed a lot of things that are out of step with our... reality. Their communications are... pitiful.

CHEKOV

They may be capable of warp drive but only warp 4.5 and their control systems are archaic.

SPOCK

Interesting, but it is consistent with their lack of transporters.

KIRK

(thoughtful)

Now that you mention it, they are a bit out of step.

SULU

Probably due to their attitude towards us 'colonials'.

TWO SHOT – SPOCK AND MCCOY

SPOCK

An astute observation, lieutenant. Many of our

technologies and scientific advances resulted from intercultural cooperation and shared research. It could be they are behind because –

MCCOY

(interrupting)

– they're too arrogant to believe that anyone else could have better ideas.

SPOCK

Not exactly what I was going to say but I believe you have identified the fundamental issue.

MCCOY

(satisfied)

You're darn right I have!

SULU (O.S.)

So what do we do with them?

MCCOY

If I had my way, I'd point them in the direction of the Romulan neutral zone and forget them.

NEW ANGLE

CHEKOV

I agree with the Doctor, Captain. They are not worth rescuing.

SPOCK

As Dr. McCoy is fond of saying, there is an insect in the mint julep.

Kirk has been amused by the conversation but now becomes concerned.

KIRK

What 'insect' is that, Spock?

SPOCK

The anomaly. While you were gone I began an intense study of it.

KIRK

And?

ON SPOCK

SPOCK

Several points, Captain.

Spock leans back on the railing and folds his arms across his chest, wrapped up in his findings.

SPOCK

First, I believe the anomaly is artificially induced and since it is so large, an enormous amount of power is needed to sustain it.

KIRK (O.S.)

But why create it?

SPOCK

Excellent question. I believe it has only one purpose, to allow travel between our space and...someone else's.

MCCOY (O.S.)

(suspicious)

Like who?

SPOCK

Another excellent question. I originally assumed that it was the people of the other Enterprise. However, with your assessment of their... limited technology, I'd say the most logical choice would be the Romulans. Their space is not too far from here and their experiments with artificial singularities could supply the required power quite easily.

ON KIRK

He's now engrossed in what Spock is saying and steps closer.

KIRK

(moving)

So the Romulans created it to travel into our space?

SPOCK (O.S.)

A distinct possibility.

We see Kirk in thought, weighing the possibilities.

THREE SHOT – KIRK, SPOCK AND MCCOY

MCCOY

Why not just cross the neutral zone?

KIRK

Because our listening posts could pick them up, Bones.

SPOCK

Exactly, but with their artificial doorway, they could bring an entire fleet within a few kilometers of Earth... or anywhere else.

McCoy is stunned.

MCCOY

Good God, Jim. If Spock is right, we need to destroy it.

KIRK

Spock?

SPOCK

Agreed, however, our choices are limited. Since so much power is required to create it, an equal or superior amount will be required to destroy it.

Kirk is deep in thought.

KIRK

I see; anything else?

SPOCK

Actually...

MCCOY

(sarcastic)

Oh boy, here it comes.

SPOCK

The possibility exists that the anomaly will require a test. If so, would it not be logical to send ships through as part of such as test?

MCCOY

(to Spock)

Boy, you're just full of good news, aren't you?

Spock seems mildly annoyed at McCoy.

SPOCK

I merely point out possibilities so the captain may make informed decisions.

ON KIRK

KIRK

All right, first things first.

(beat)

Chekov, have you started preparing the summary for the other Enterprise?

CHEKOV (O.S.)

Working on it now, sir.

KIRK

We'll need to omit certain items, meanwhile I want you and Mr. Spock to put together a full analysis of the anomaly. Include all of Mr. Spock's speculations. Maybe we can convince those people to accept some of our realities.

AS BEFORE – THREE SHOT – KIRK, SPOCK AND MCCOY

Spock remains and stares at Kirk, hesitant.

KIRK

(continuing)

Was there something else, Spock?

SPOCK

Actually, I was not finished.

McCoy is exasperated and surly.

MCCOY

Now what?

ON SPOCK

SPOCK

The other Enterprise represents another... difficulty. If we are to assume the Romulans are attempting to create a doorway of sorts, the other ship is evidence of a more troubling aspect. The Romulans may have opened the Federation up to multiple incursions by an unlimited number of aliens from all over the galaxy and... alternative realities.

AS BEFORE – THREE SHOT – KIRK, SPOCK AND MCCOY

MCCOY

When you get started with the good news, you just can't stop, can you?

We can see Kirk considering Spock's warning.

KIRK

(grim)

He's right, doctor. We may be in over our heads here. This 'doorway' could be a bigger problem than we realized.

Off Kirk's comment...

FADE OUT.

END OF PART ONE - ACT TWO

Upcoming Events

Jul	2	4 p.m. Ship Meeting Texas Steakhouse, Morrisville
	22	Opening of <i>Star Trek Beyond</i>
	23	Recruiting at a theater showing <i>STB</i> ... Location and other details TBA
Aug		No meeting
	13	Articles due for Jul/Aug newsletter
Sep	3	4 p.m. Ship Meeting ... possible cookout, location TBD

DON'T FORGET TO CHECK YOUR STARFLEET STATUS

THE WRIGHT STUFF
U.S.S. KITTY HAWK
5017 Glen Forest Dr.
RALEIGH NC 27612